

February 2021

Strategy Description

The Horizon Fund is an equity long short sector-focused fund, investing across global listed infrastructure and utility stocks. The Fund aims to generate positive, absolute returns and minimise drawdowns by applying a fundamental, thematic and risk-centric approach to investing within the sector.

Performance Statistics

Last Month ↓ -2.45%	Total Return ↓ -2.86%
Winning Months (%) ↑ 33.33%	Beta ↓ -0.09
Average Winning Month ↑ 0.17%	Average Losing Month ↓ -1.52%
Best Month ↑ 0.17%	Worst Month ↓ -2.45%

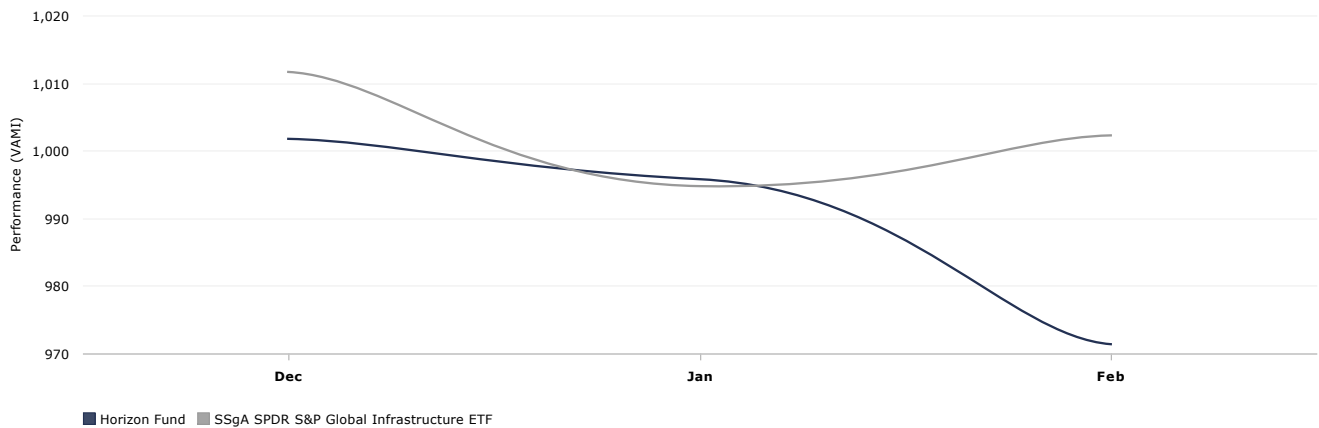
Risk Statistics

Annualized Return	-10.96%
Annualized Std. Deviation	3.81%
Sharpe Ratio	-3.01
Sortino Ratio	-2.29
Standard Deviation (monthly)	1.10%
Correlation vs. SSgA SPDR S&P Global Infrastructure ETF	-0.10
Downside Deviation	1.45

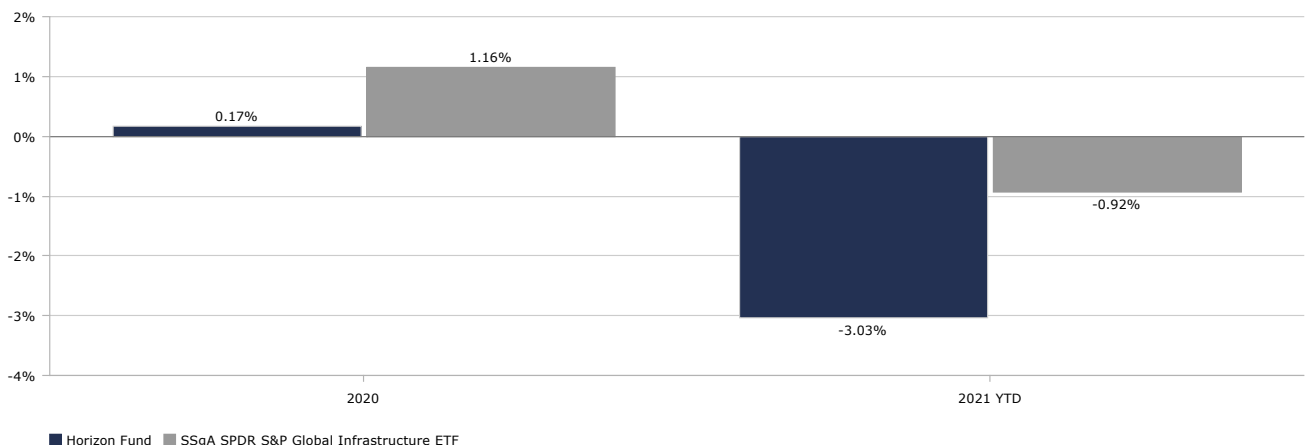
Monthly Performance

	Jan	Feb	Mar	Apr	May	Jun	Jul	Aug	Sep	Oct	Nov	Dec	Year
2021	-0.59	-2.45											-3.03
2020												0.17	0.17

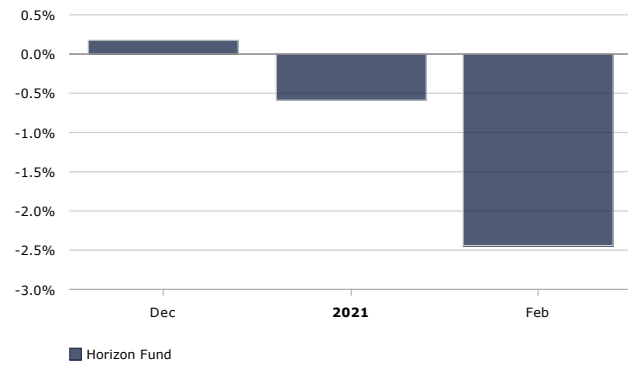
Performance (VAMI)



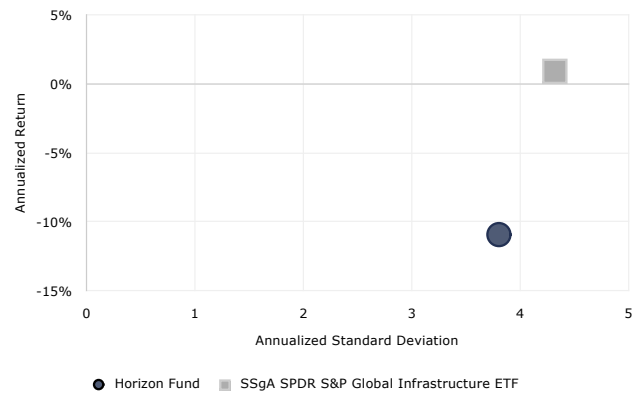
Annual Performance



Monthly Returns



Risk/Return Comparison



Portfolio Manager

10 years experience as an analyst, trader & portfolio manager at RARE Infrastructure, a dedicated global infrastructure and utilities fund manager in Sydney & London

18 months track record running a long/short portfolio prior to seed investment, including responsibility for product design, idea generation, portfolio construction & risk management

Experience designing and running dedicated income enhancement overlays for income products, primarily over and underwriting programs

Built & managed a global trading desk of 3 traders in Sydney & London, responsible for best execution across equities & FX, global trading relationships, trading systems & tools, CSA programmes & TCA outcomes

Prior experience at Merrill Lynch in Hedge Fund Sales & Options DTR, covering special situations and events

B Commerce (Liberal Studies) from University of Sydney, Majors in Accounting, Finance and Government & International Relations and holds a Chartered Alternative Investment Analyst designation (CAIA).

About Coaster Capital

Coaster Capital is an investment management boutique founded in 2019 with offices in Brisbane & Sydney, Australia. The firm was established with a goal to design, develop, and manage a selection of exclusive, high-performing funds, with limited capacity. Importantly, the firm is 100 percent owned by our executive team who are invested alongside our clients in Coaster's funds.

General Information

Minimum Investment	50,000 AUD
Liquidity	Monthly
Management Fee	1.5%
Performance Fee	15%
Highwater Mark	Yes
Administrator	Apex Fund Services
Auditor	Ernst & Young
Company	Coaster Capital
Custodian	Morgan Stanley
Legal Advisor	Minter Ellison
Email	ir@coastercapital.com.au
Phone	+61 7 3039 0000

DISCLAIMER

The information contained in this factsheet has been prepared by Coaster Capital Pty Ltd ABN 635 699 080 ('Coaster Capital') operating under the Corporate Authorisation No. 001279156 from Quay Fund Services AFSL No.494886. This factsheet is given to only 'wholesale clients' (as defined in the Corporations Act 2001 (Cth)) or other eligible investors as defined by their relevant jurisdiction. By attending or reviewing this factsheet, you are representing that you are a 'wholesale client' or eligible investor and that you will keep this factsheet and the information therein confidential including notto provide it to retail clients.

This factsheet does not take into account the objectives, financial situation or needs of any particular person. The information in this factsheet is intended only for purposes of giving you a general understanding of an investment in the Coaster MultiStrategy Fund ('the Fund') and is not intended to be a definitive statement on the subject matter nor should be relied upon in making a decision to invest in the Fund. Persons should rely solely upon their own investigations in respect of the subject matter discussed in this factsheet. An investment in the fund carries potential risks and fees which are described in the applicable offering document.

Any forward looking statements, opinions and estimates provided in this factsheet are based on assumptions and contingencies which are subject to change without notice. Forward looking statements including projections and estimates are provided as a general guide only and should not be relied upon as an indication of the future performance of the Fund.

No representations or warranties, express or implied, are made as to the accuracy or completeness of the information, opinions and conclusions contained in this factsheet. In preparing this factsheet, we have relied upon and assumed, without independent verification, the accuracy and completeness of all information available to Coaster Capital. To the maximum extent permitted by law, neither Coaster Capital nor its directors, employees or agents accept any liability for any loss arising in relation to this factsheet. Neither Coaster Capital nor any other person guarantees the investment performance, earnings or return of capital invested in the Fund.

This factsheet does not constitute an offer to sell or a solicitation of an offer to buy interests or securities in any jurisdiction to any person to whom it is unlawful to make such offer or solicitation.